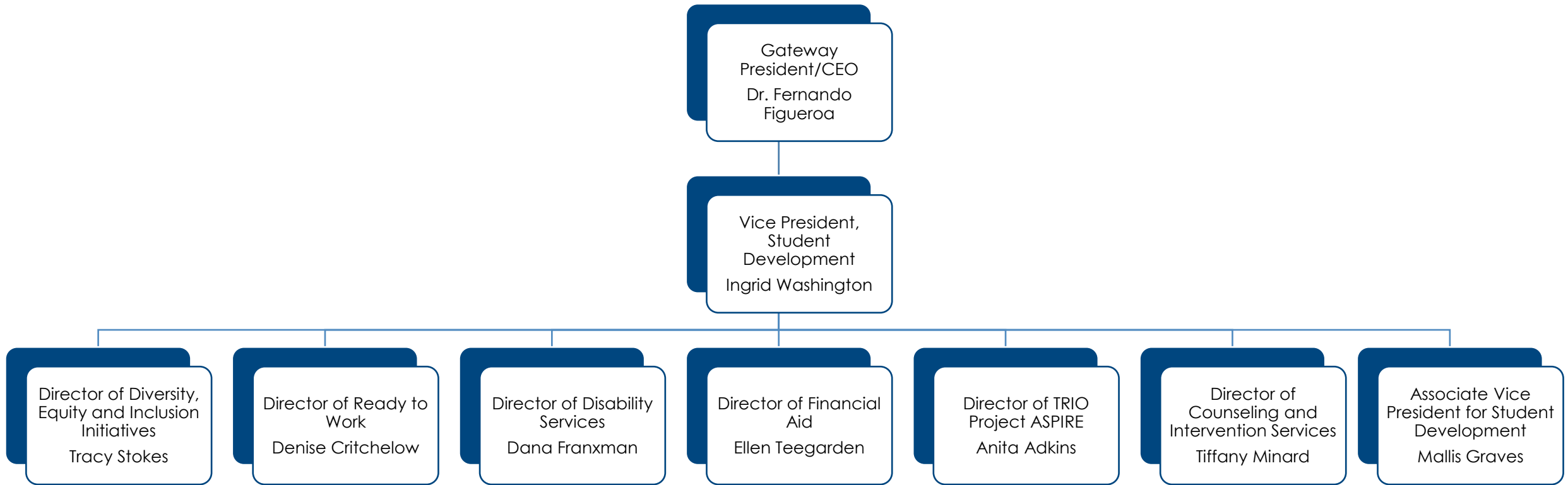


Gateway Community & Technical College Student Development Organizational Chart



Gateway Community & Technical College Student Development Organizational Chart

1. Gateway President/CEO, Dr. Fernando Figueroa
 - a) Vice President, Student Development, Ingrid Washington
 1. Director of Diversity, Equity & Inclusion Initiatives, Tracy Stokes
 2. Director of Ready to Work, Denise Critchelow
 3. Director of Disability Services, Dana Franxman
 4. Director of Financial Aid, Ellen Teegarden
 5. Director of TRIO Project ASPIRE, Anita Adkins
 6. Director of Counseling and Intervention Services, Tiffany Minard
 7. Associate Vice President of Student Development, Mallis Graves

