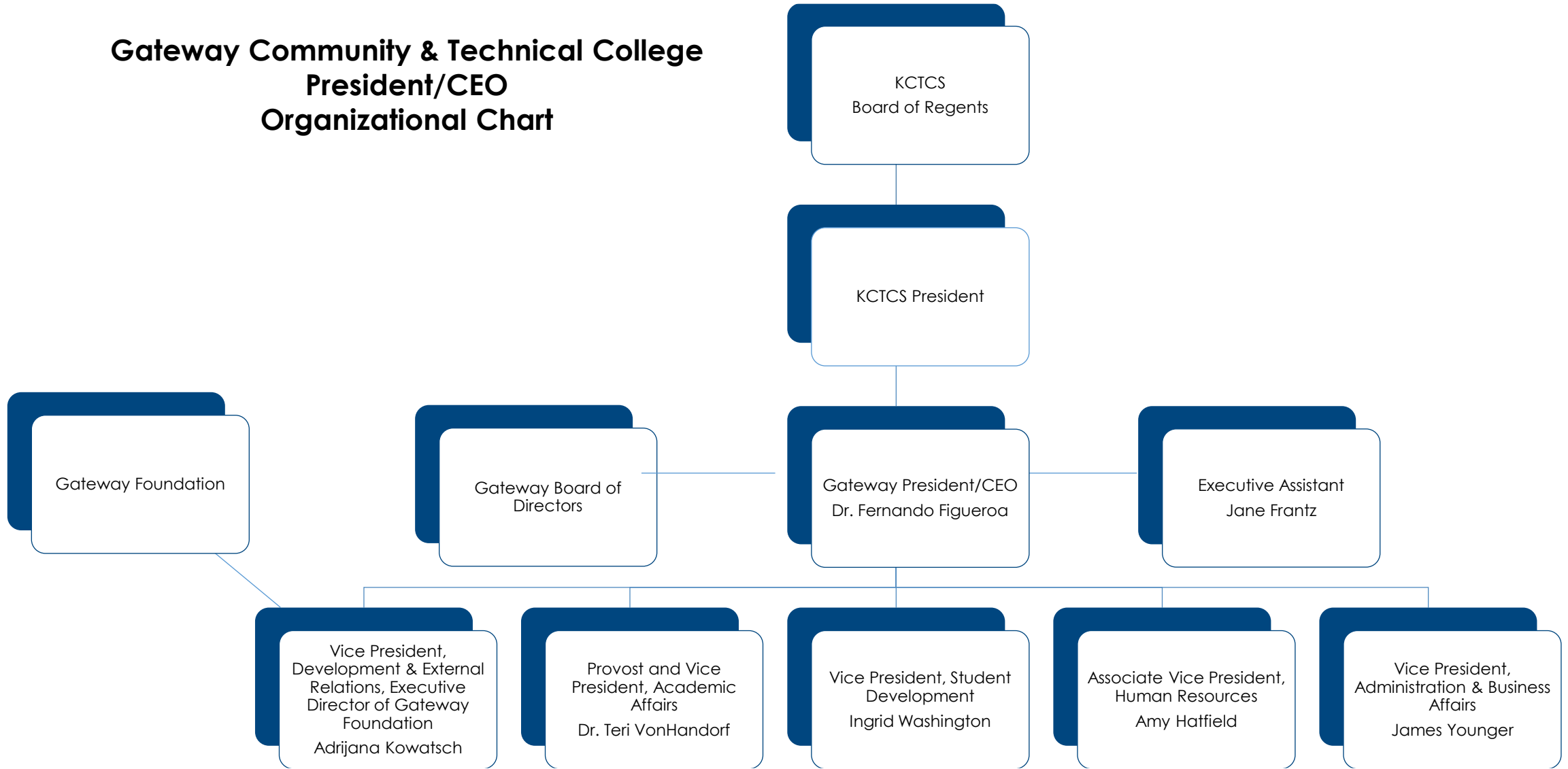


Gateway Community & Technical College President/CEO Organizational Chart



Gateway Community & Technical College President/CEO Organizational Chart

1. KCTCS Board of Regents

a) KCTCS President

- i. Gateway President/CEO, Dr. Fernando Figueroa
 - 1. Gateway Board of Directors
 - 2. Executive Assistant, Jane Frantz
 - 3. Vice President, Development & External Relations, Adrijana Kowatsch
 - 4. Provost and Vice President, Academic Affairs, Dr. Teri VonHandorf
 - 5. Vice President, Student Development, Ingrid Washington
 - 6. Associate Vice President, Human Resources, Amy Hatfield
 - 7. Vice President, Administration & Business Affairs, James Younger



GATEWAY
COMMUNITY
& TECHNICAL **COLLEGE**