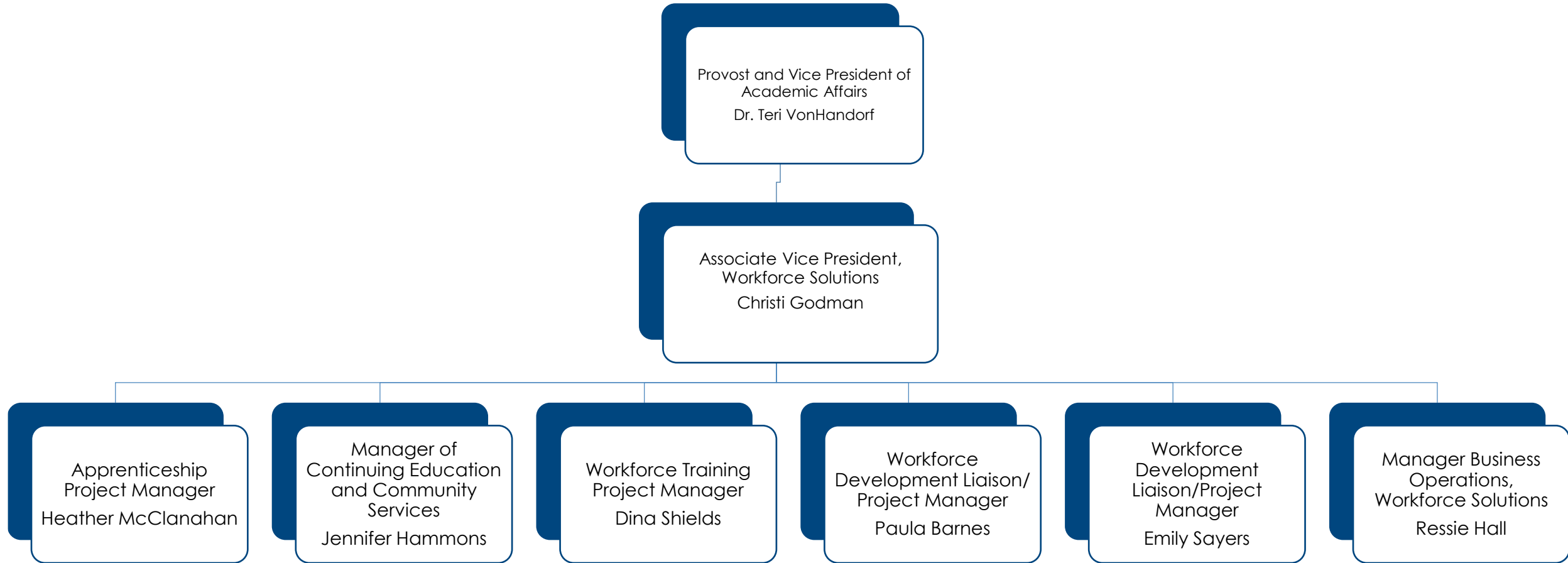


Gateway Community & Technical College Workforce Solutions Organizational Chart



Gateway Community & Technical College Workforce Solutions Organizational Chart

1. Gateway President/CEO, Dr. Fernando Figueroa
 - a) Provost and Vice President, Academic Affairs, Dr. Teri VonHandorf
 - i. Associate Vice President, Workforce Solutions, Christi Godman
 1. Apprenticeship Project Manager, Heather McClanahan
 2. Manager of Continuing Education and Community Services, Jennifer Hammons
 3. Workforce Training Project Manager, Dina Shields
 4. Workforce Development Liaison/Project Manager, Paula Barnes
 5. Workforce Development Liaison/Project Manager, Emily Sayers
 6. Manager, Business Operations, Workforce Solutions, Ressie Hall

