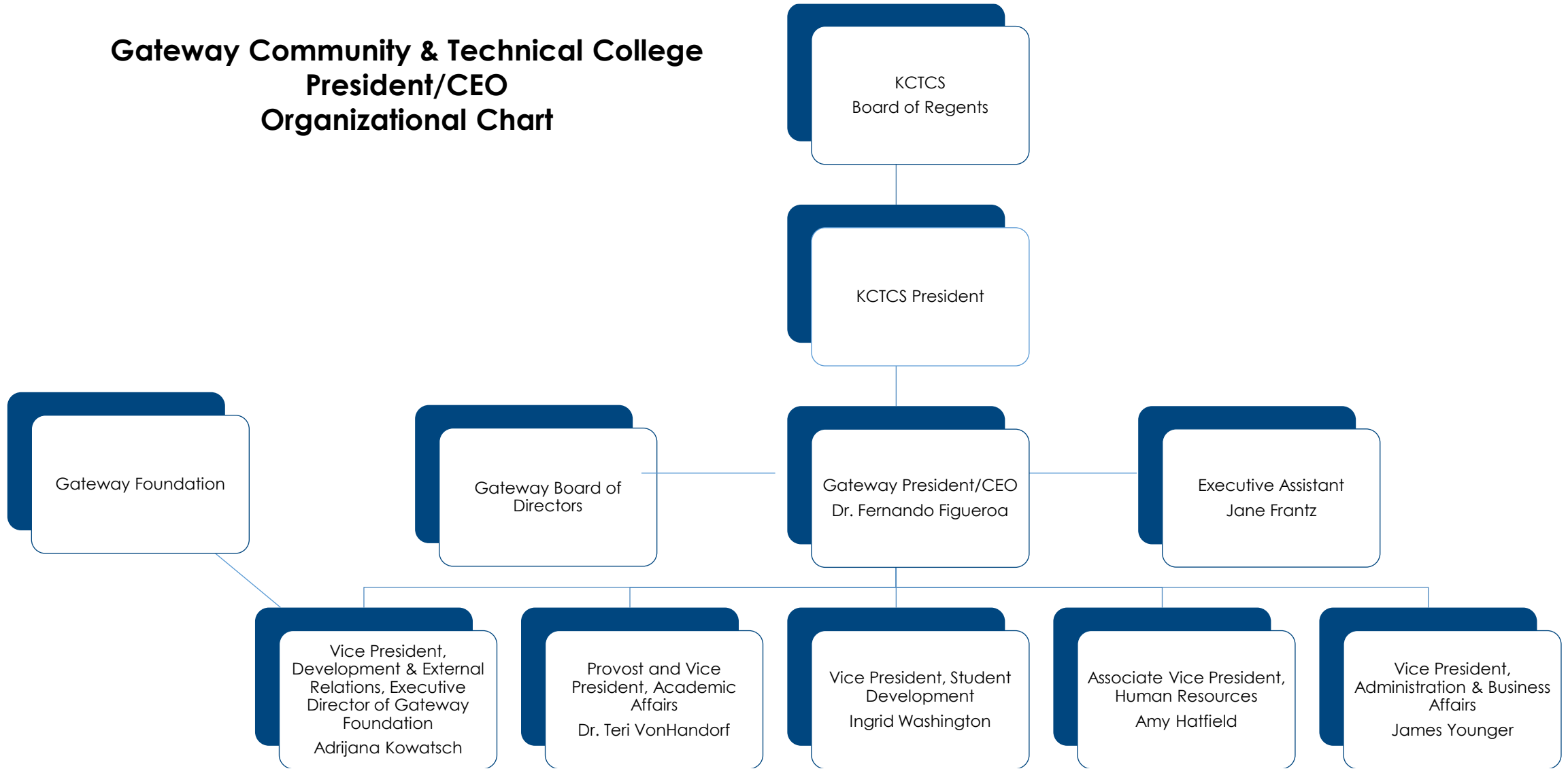


Gateway Community & Technical College President/CEO Organizational Chart



Gateway Community & Technical College President/CEO Organizational Chart

1. KCTCS Board of Regents

a) KCTCS President

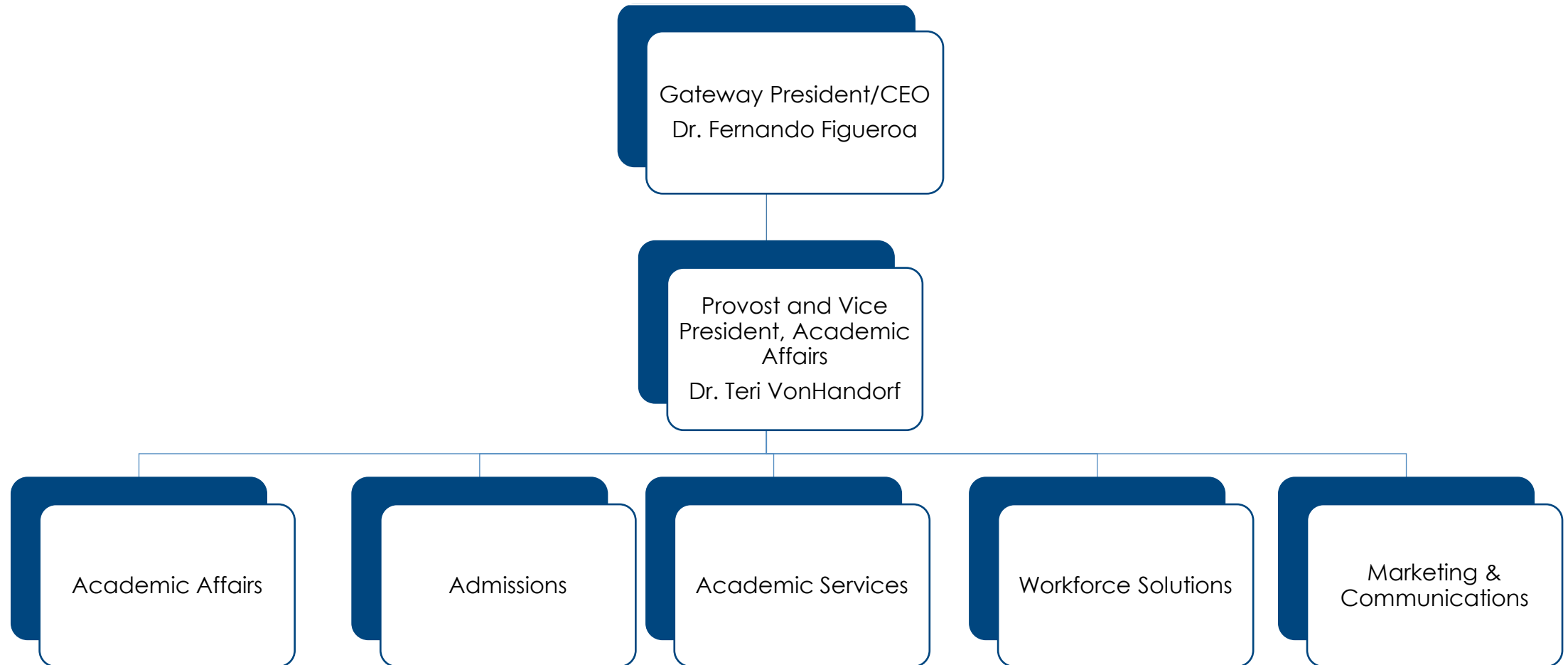
- i. Gateway President/CEO, Dr. Fernando Figueroa
 - 1. Gateway Board of Directors
 - 2. Executive Assistant, Jane Frantz
 - 3. Vice President, Development & External Relations, Adrijana Kowatsch
 - 4. Provost and Vice President, Academic Affairs, Dr. Teri VonHandorf
 - 5. Vice President, Student Development, Ingrid Washington
 - 6. Associate Vice President, Human Resources, Amy Hatfield
 - 7. Vice President, Administration & Business Affairs, James Younger



Gateway Community & Technical College

Academic Affairs

Organizational Chart



GATEWAY
COMMUNITY
& TECHNICAL COLLEGE

Gateway Community & Technical College Academic Affairs Organizational Chart

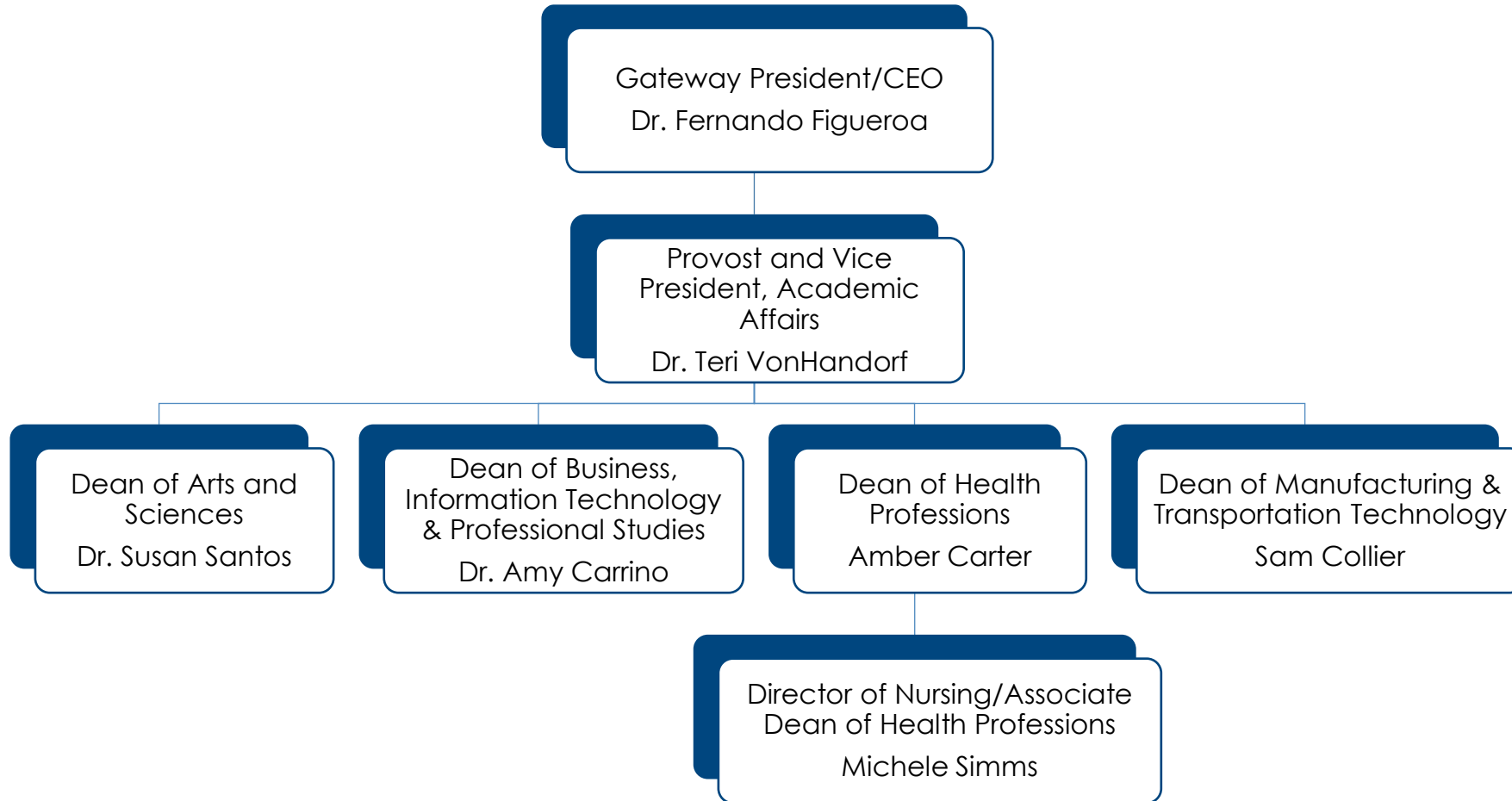
1. Gateway President/CEO, Dr. Fernando Figueroa
 - a) Provost and Vice President, Academic Affairs, Dr. Teri VonHandorf
 1. Academic Affairs
 2. Admissions
 3. Academic Services
 4. Workforce Solutions
 5. Marketing & Communications



Gateway Community & Technical College

Academic Affairs - Divisions

Organizational Chart



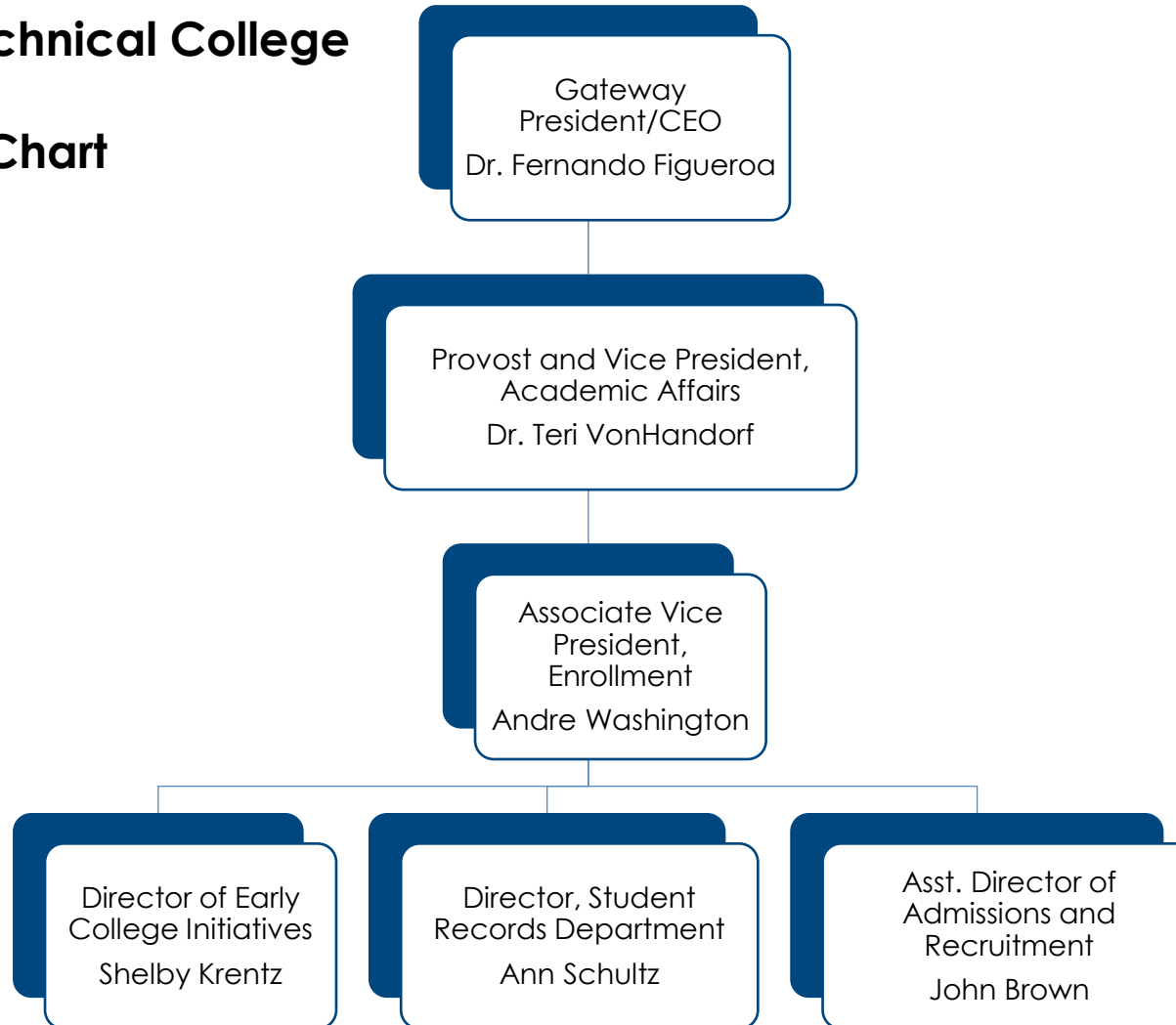
Gateway Community & Technical College

Academic Affairs – Divisions Organizational Chart

1. Gateway President/CEO, Dr. Fernando Figueroa
 - a) Provost and Vice President, Academic Affairs, Dr. Teri VonHandorf
 1. Dean of Arts and Sciences, Dr. Susan Santos
 2. Dean of Business, Information Technology, and Professional Studies, Dr. Amy Carrino
 3. Dean of Health Professions, Amber Carter
 - i. Director of Nursing/Associate Dean of Health Professions, Michele Simms
 4. Dean of Manufacturing and Transportation Technology, Sam Collier



Gateway Community & Technical College Admissions Organizational Chart



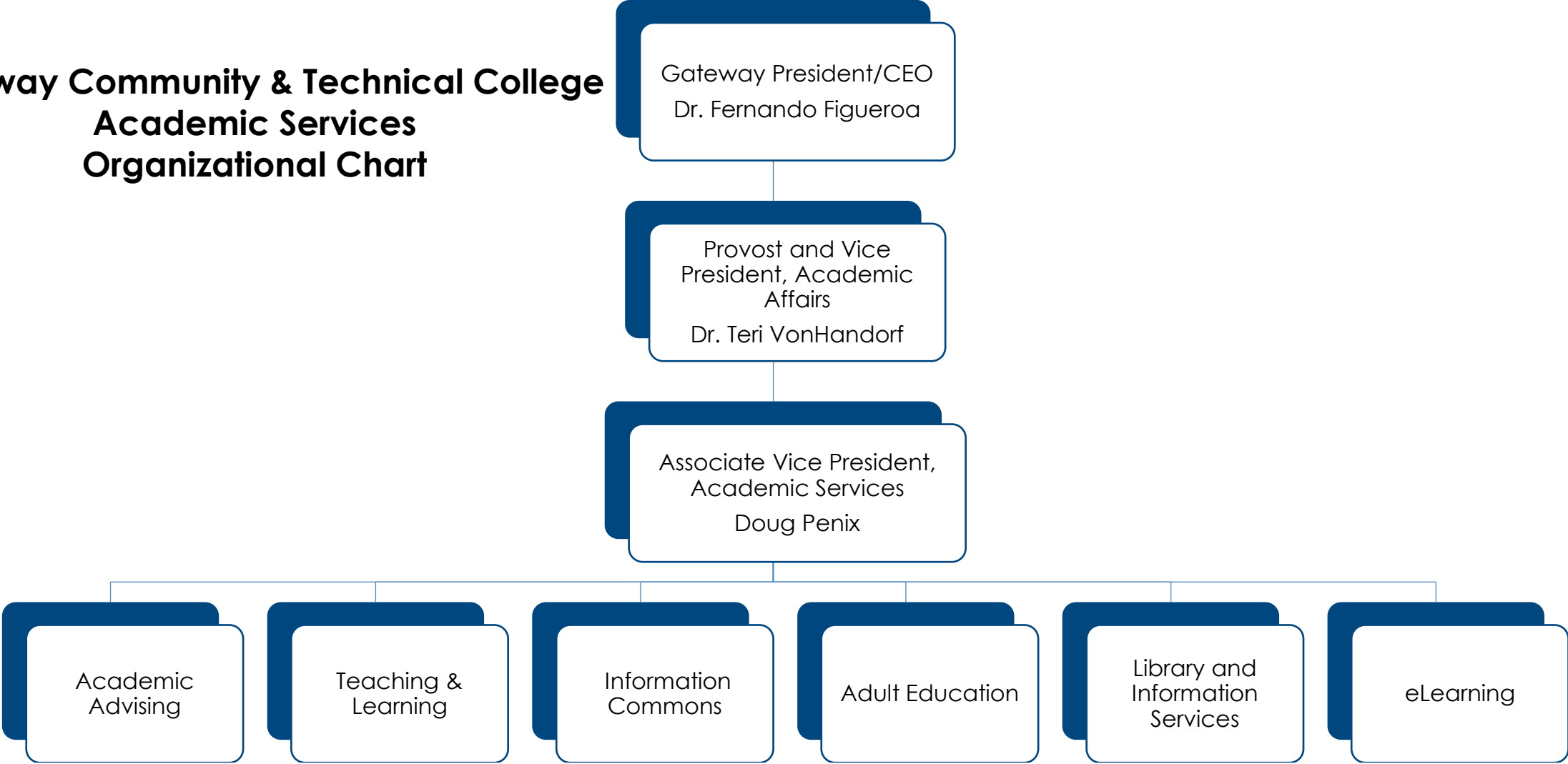
Gateway Community & Technical College Admissions Organizational Chart

1. Gateway President/CEO, Dr. Fernando Figueroa
 - a. Provost and Vice President, Academic Affairs, Dr. Teri VonHandorf
 - i. Associate Vice President, Enrollment, Andre Washington
 1. Directory of Early College Initiatives, Shelby Krentz
 2. Director, Student Records Department, Ann Schultz
 3. Asst. Director of Admissions and Recruitment, John Brown



GATEWAY
COMMUNITY
& TECHNICAL **COLLEGE**

Gateway Community & Technical College Academic Services Organizational Chart

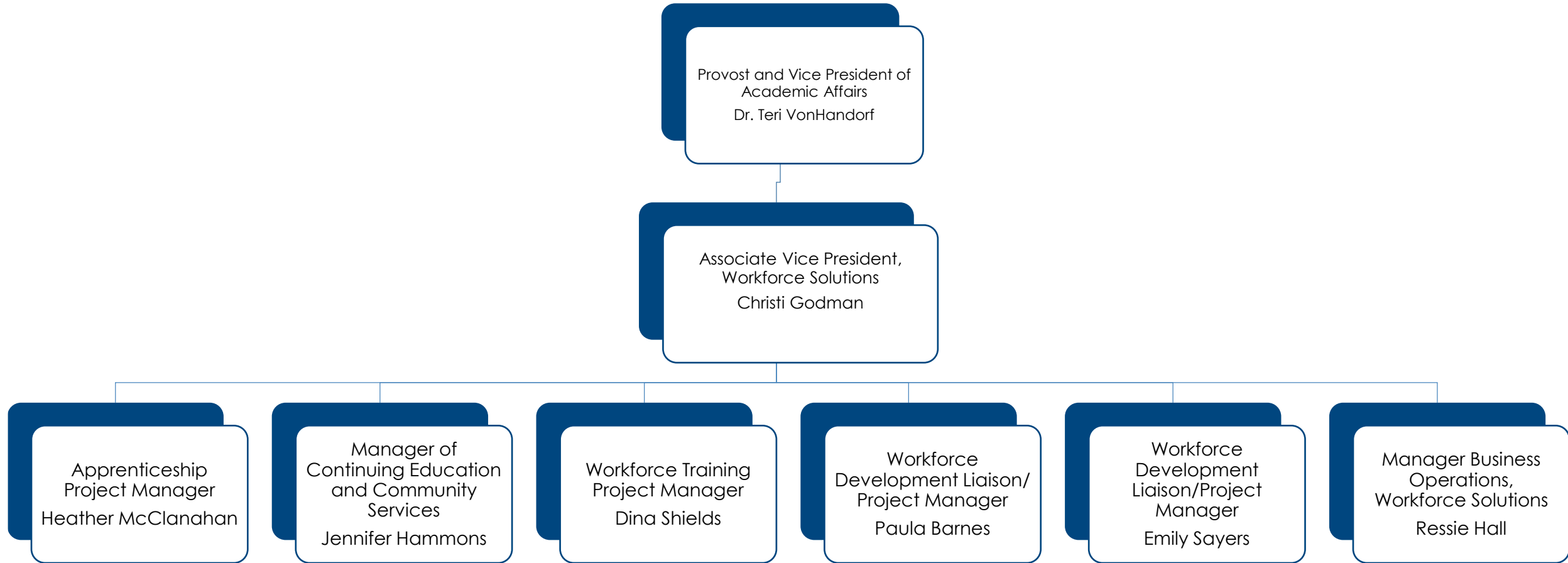


Gateway Community & Technical College Academic Services Organizational Chart

1. Gateway President/CEO, Dr. Fernando Figueroa
 - a) Provost and Vice President, Academic Affairs, Dr. Teri VonHandorf
 - i. Associate Vice President, Academic Services, Doug Penix
 1. Academic Advising
 2. Teaching & Learning
 3. Information Commons
 4. Adult Education
 5. Library and Information Services
 6. eLearning



Gateway Community & Technical College Workforce Solutions Organizational Chart

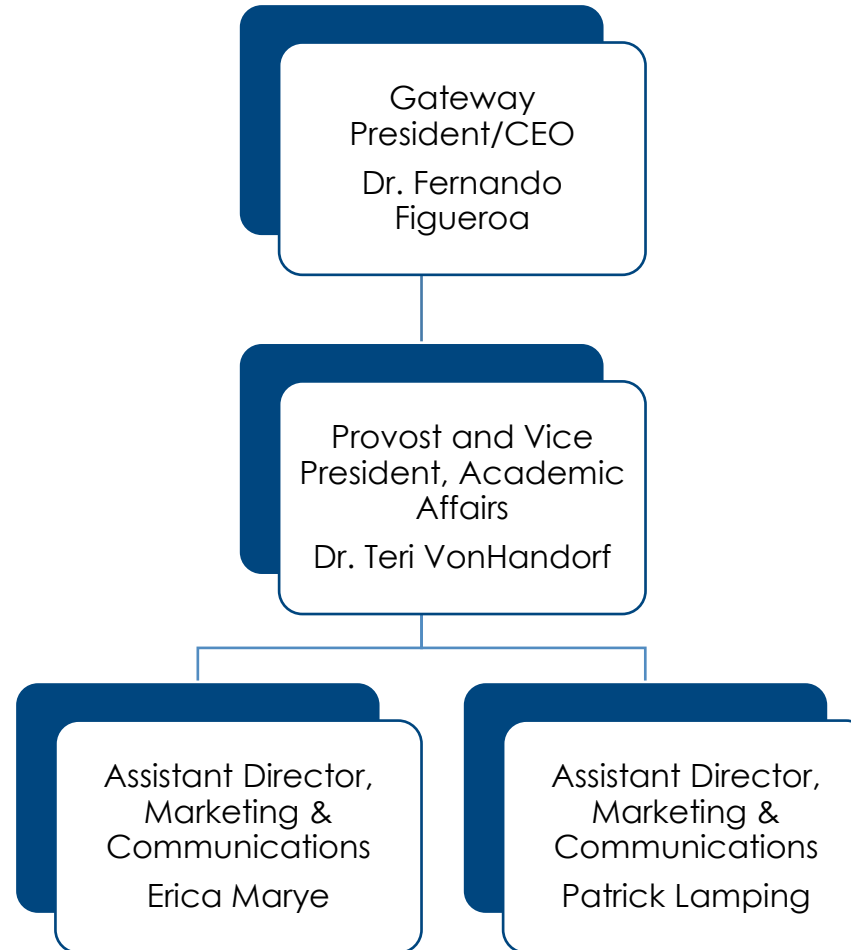


Gateway Community & Technical College Workforce Solutions Organizational Chart

1. Gateway President/CEO, Dr. Fernando Figueroa
 - a) Provost and Vice President, Academic Affairs, Dr. Teri VonHandorf
 - i. Associate Vice President, Workforce Solutions, Christi Godman
 1. Apprenticeship Project Manager, Heather McClanahan
 2. Manager of Continuing Education and Community Services, Jennifer Hammons
 3. Workforce Training Project Manager, Dina Shields
 4. Workforce Development Liaison/Project Manager, Paula Barnes
 5. Workforce Development Liaison/Project Manager, Emily Sayers
 6. Manager, Business Operations, Workforce Solutions, Ressie Hall



Gateway Community & Technical College Marketing & Communications Organizational Chart



Gateway Community & Technical College Marketing & Communications Organizational Chart

1. Gateway President/CEO, Dr. Fernando Figueroa
 - a) Provost and Vice President, Academic Affairs, Dr. Teri VonHandorf
 1. Assistant Director, Marketing & Communications, Erica Marye
 2. Assistant Director, Marketing & Communications, Patrick Lamping



GATEWAY
COMMUNITY
& TECHNICAL **COLLEGE**

Gateway Community & Technical College Knowledge Management & Strategic Initiatives Organizational Chart



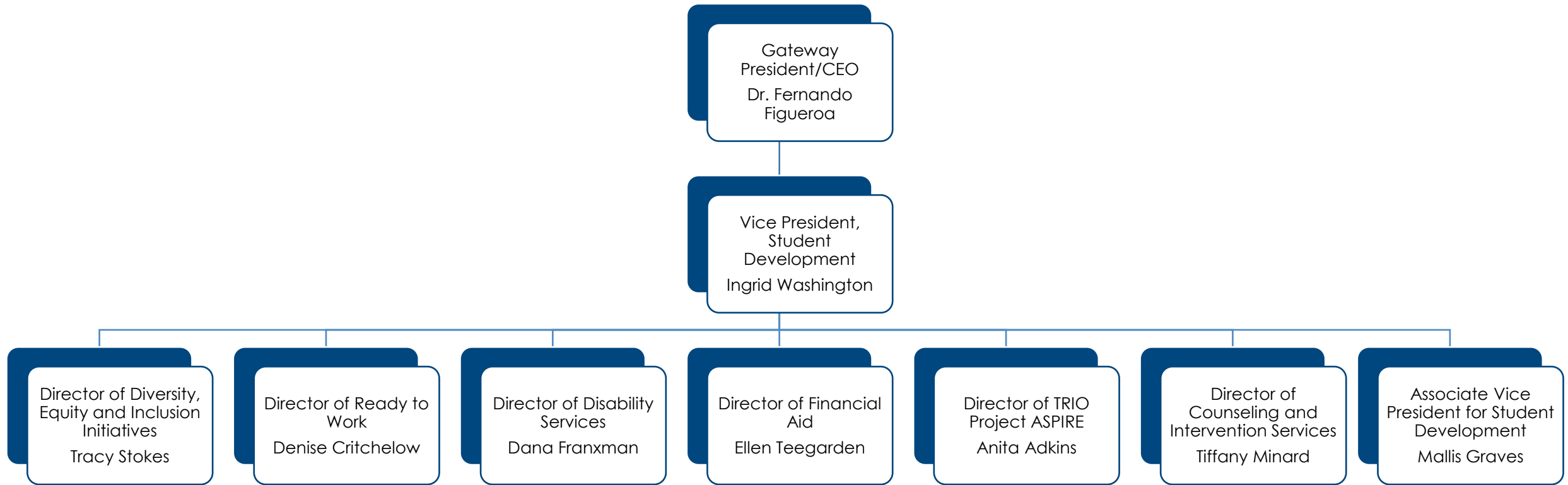
GATEWAY
COMMUNITY
& TECHNICAL COLLEGE

Gateway Community & Technical College Knowledge Management & Strategic Initiatives Organizational Chart

1. Gateway President/CEO, Dr. Fernando Figueroa
 - a) Vice President, Administration & Business Affairs, James Younger
 - I. Dean of Institutional Effectiveness, Dr. Denise Fritsch
 1. Director of Knowledge Management, Steve Popple
 - i. Knowledge Analyst, Rebecca Johnson



Gateway Community & Technical College Student Development Organizational Chart

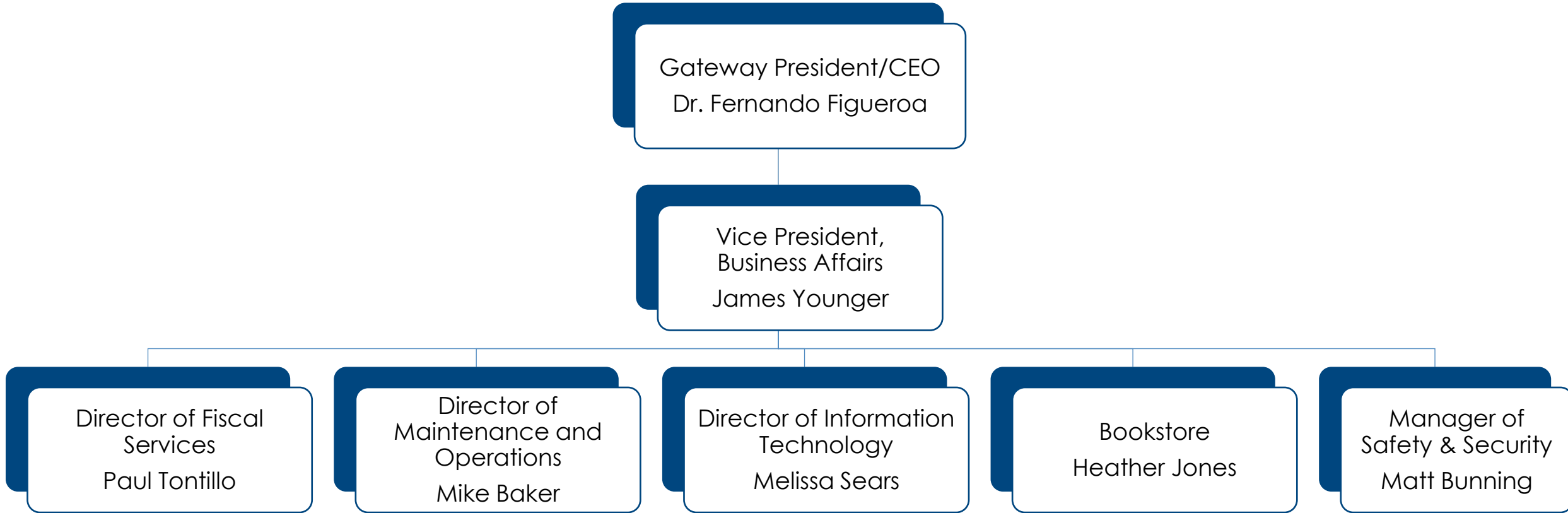


Gateway Community & Technical College Student Development Organizational Chart

1. Gateway President/CEO, Dr. Fernando Figueroa
 - a) Vice President, Student Development, Ingrid Washington
 1. Director of Diversity, Equity & Inclusion Initiatives, Tracy Stokes
 2. Director of Ready to Work, Denise Critchelow
 3. Director of Disability Services, Dana Franxman
 4. Director of Financial Aid, Ellen Teegarden
 5. Director of TRIO Project ASPIRE, Anita Adkins
 6. Director of Counseling and Intervention Services, Tiffany Minard
 7. Associate Vice President of Student Development, Mallis Graves



Gateway Community & Technical College Business Affairs Organizational Chart

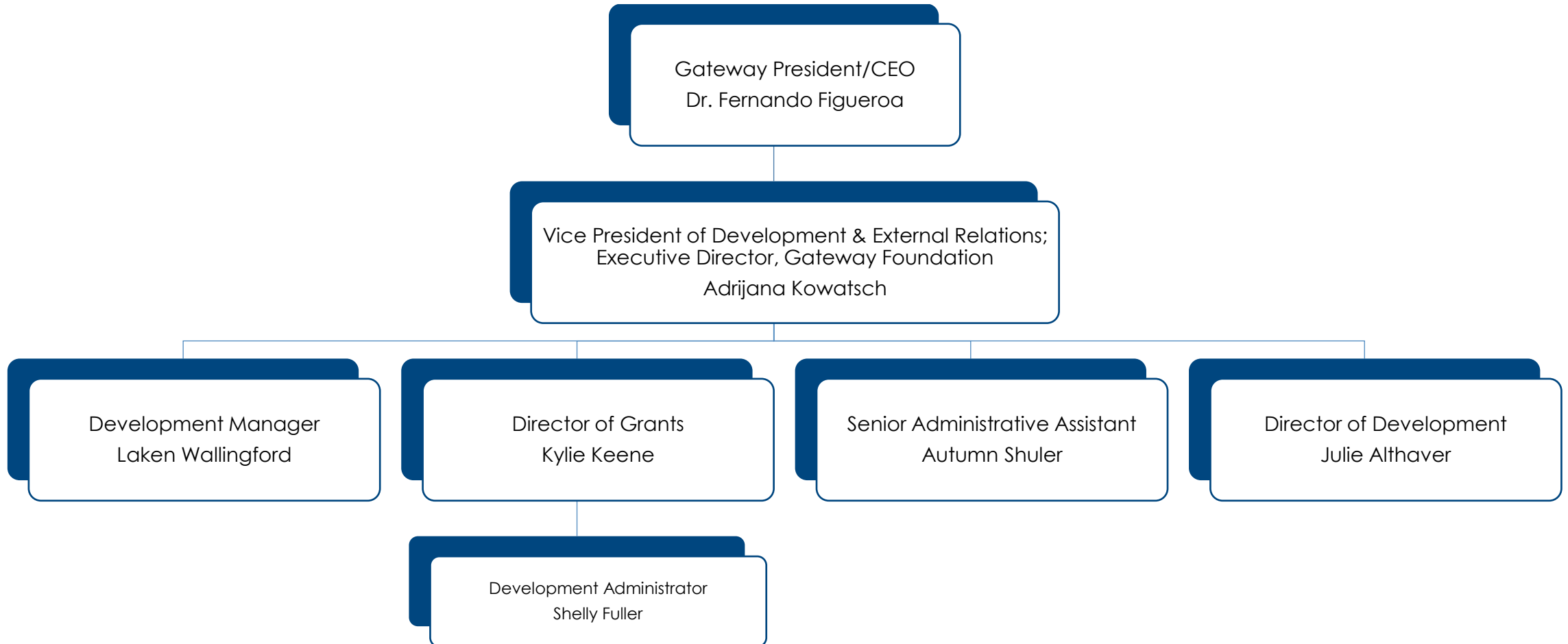


Gateway Community & Technical College Business Affairs Organizational Chart

1. Gateway President/CEO, Dr. Fernando Figueroa
 - a) Vice President, Administration & Business Affairs, James Younger
 1. Director of Fiscal Services, Paul Tontillo
 2. Director of Maintenance and Operations, Mike Baker
 3. Director of Information Technology, Melissa Sears
 4. Bookstore, Heather Jones
 5. Manager of Safety & Security, Matt Bunning



Gateway Community & Technical College Development Organizational Chart

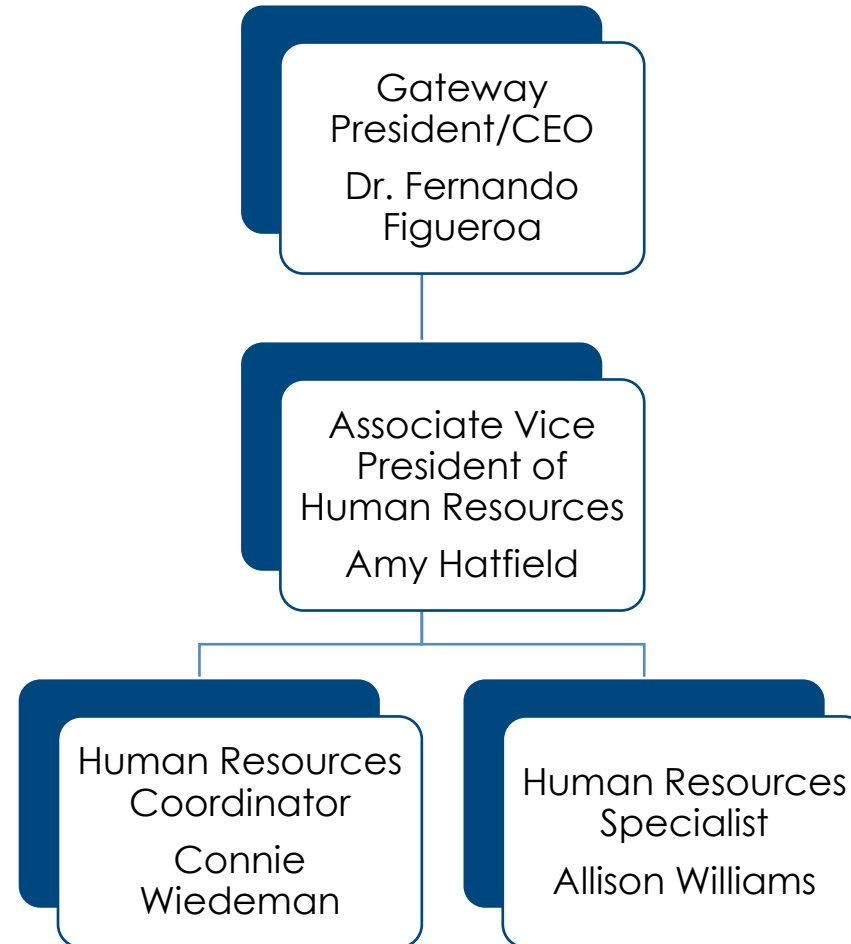


Gateway Community & Technical College Development Organizational Chart

1. Gateway President/CEO, Dr. Fernando Figueroa
 - a) Vice President of Development & External Relations; Executive Director, Gateway Foundation, Adrijana Kowatsch
 - i. Development Manager, Laken Wallingford
 - ii. Director of Grants, Kylie Keene
 - 1) Development Administrator, Shelly Fuller
 - iii. Senior Administrative Assistant, Autumn Shuler
 - iv. Director of Development, Julie Althaver



Gateway Community & Technical College Human Resources Organizational Chart



Gateway Community & Technical College Human Resources Organizational Chart

1. Gateway President/CEO, Dr. Fernando Figueroa
 - a) Associate Vice President of Human Resources, Amy Hatfield
 1. Human Resources Coordinator, Connie Wiedeman
 2. Human Resources Specialist, Allison Williams



GATEWAY
COMMUNITY
& TECHNICAL **COLLEGE**