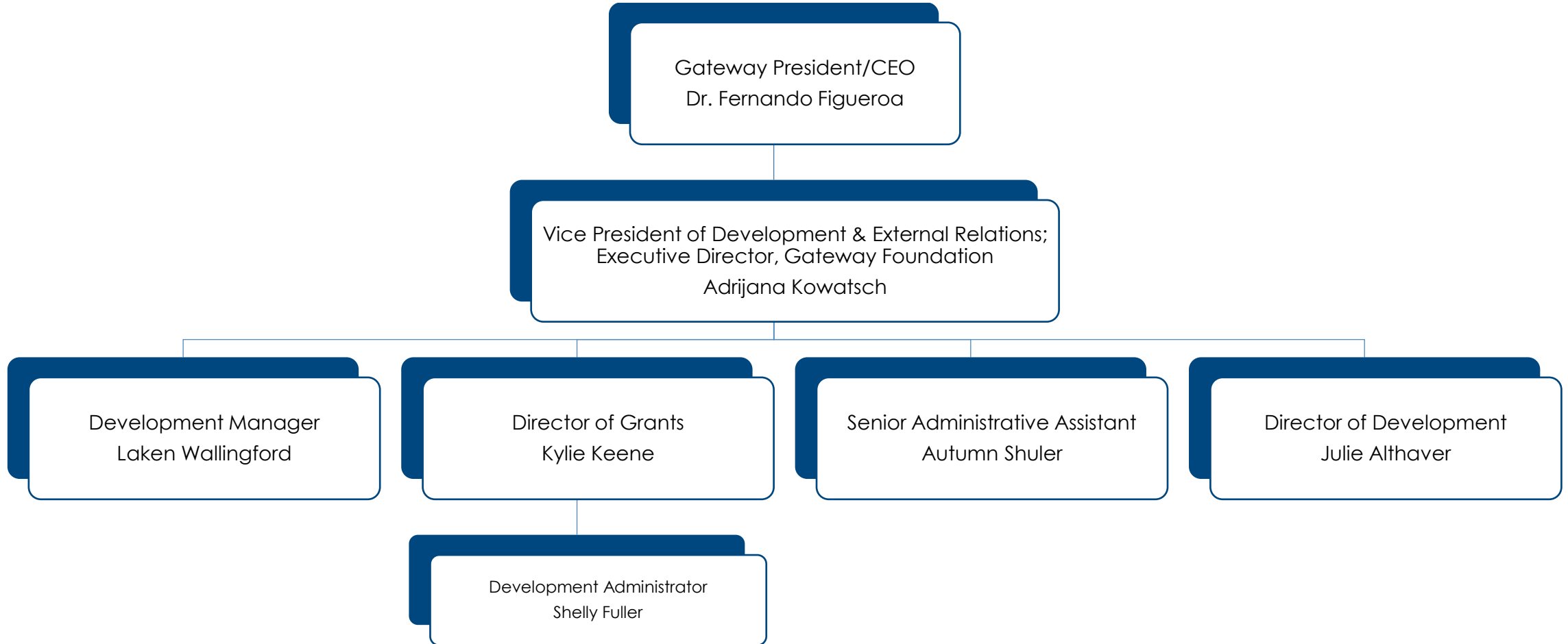


# Gateway Community & Technical College Development Organizational Chart



# Gateway Community & Technical College Development Organizational Chart

1. Gateway President/CEO, Dr. Fernando Figueroa
  - a) Vice President of Development & External Relations; Executive Director, Gateway Foundation, Adrijana Kowatsch
    - i. Development Manager, Laken Wallingford
    - ii. Director of Grants, Kylie Keene
      - 1) Development Administrator, Shelly Fuller
    - iii. Senior Administrative Assistant, Autumn Shuler
    - iv. Director of Development, Julie Althaver

